

LUXURY LIVING

Volume 21, Issue 1

published by HOUSE & HOME

Special
Edition!

Recipe for Change

Projects to give your
kitchen a new look

Visit
housemagazine.com
for a free estimate
from a local home
improvement pro!
Look for this button:

Free Estimate
Click Here

ASK
THE
EXPERT



GERM-NIX

What to know about professional
disinfecting services page 27

GREAT ESTATES

A twin home doubles the design
personality in Sea Isle City

Visit www.HouseMagazine.com to view our Online Design Center



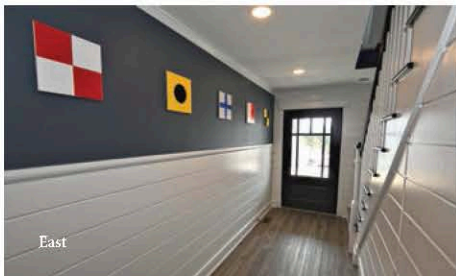
Interior Designer:
Tina Marie Warren
 TMWCS, Inc.
 (215) 208-5136
 TMWCSL.com

Builder:
Heron Builders LLC
 HeronBuildersLLC.com

Architect:
Blane Steinman Architect LLC
 BSA.BESArchitects.com

Photographer:
AC Photo
 ACPhoto.com

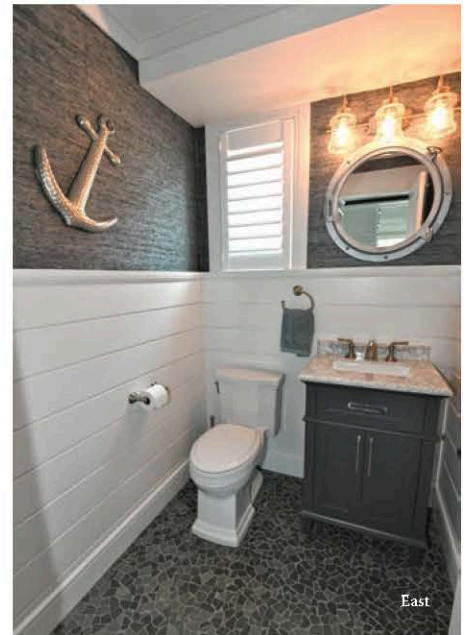
East



East



West



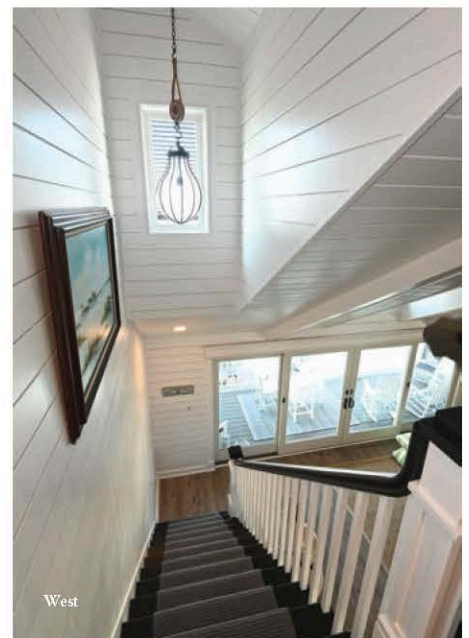
East



The east and west sides of this twin home in Sea Isle City are each owned by sisters and used exclusively as their family vacation homes. This project began in 2016 with completely gutting both east and west, which allowed them to accomplish the goals of raising the previously low ceilings and roof line as well as adding bathrooms on the first floor for the growing families. Interior designer Tina Marie Warren says this project presented unique challenges working with two different owners who each have their own styles, while still creating a cohesive look. The east side's interior has Nantucket charm with a transitional approach, she says, captured by the contrast of navy, pure white shiplap and soft gray walls, accentuated by slate, cut rock and glass tile. The west side is Cape Cod meets traditional, incorporating a nautical theme with porthole mirrors, vintage lantern-style fixtures in aged bronze, wrought iron and jute accompanied by distressed and reclaimed wood touches throughout. Shared colors and nautical accents marry the homes to provide these families a "compound" where they can create memories for generations to come.



West



West

seating double



West

